

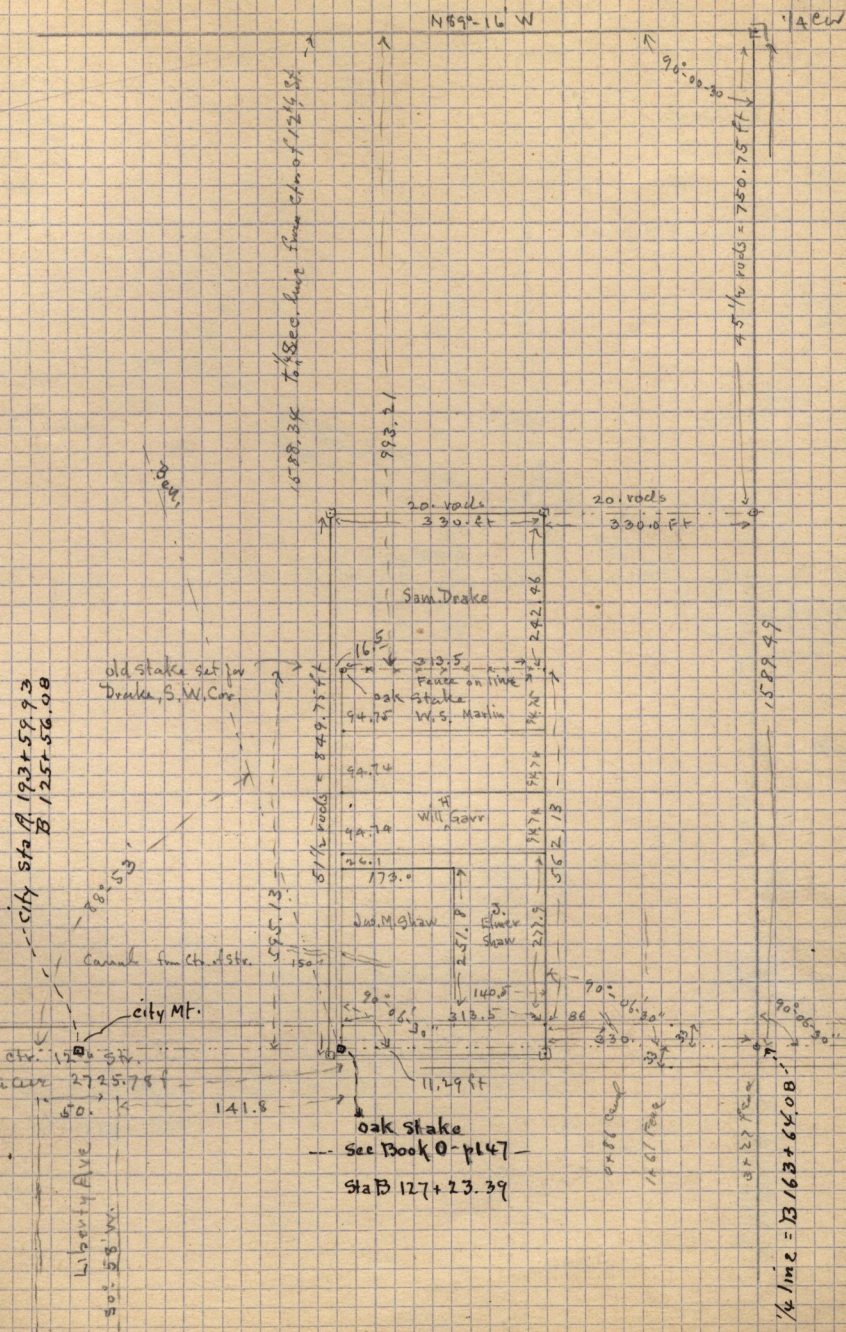
July 3, 1916 - Survey for Will Garv of part of

155

Sec D p. 147  
Sec P 9. 59  
Plus books

N.W. 1/4 Sec 21 - T. 6 N. - R. 1 W.

being 4.045 ac after deducting streets



To Str Wastyle Ave  
589-09-45 E

Liberty Ave  
50° 55' W.

oak stake  
Sec Book O - p 147  
Sta B 127 + 23.39

1/4 line = B 163 + 64.08